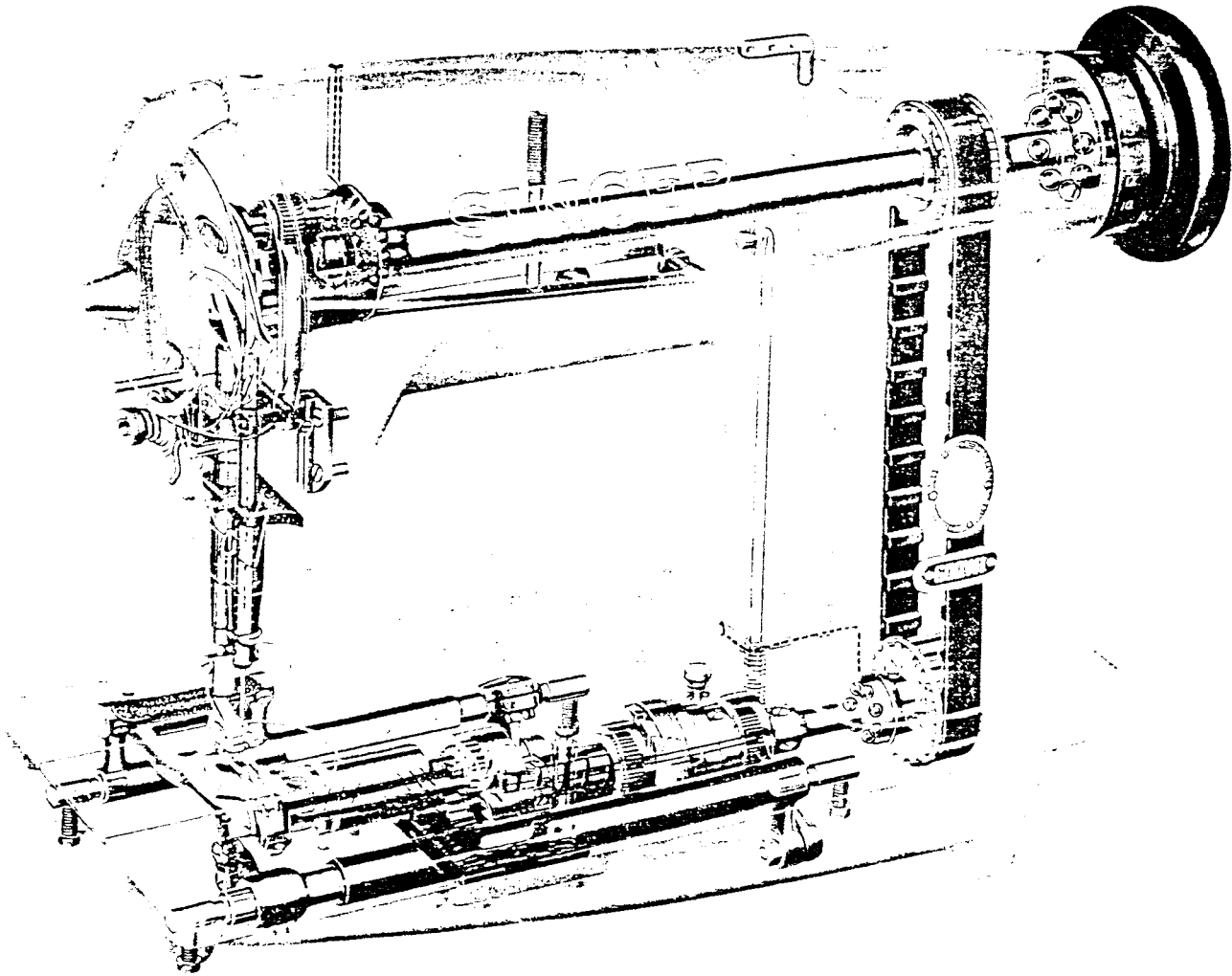


SINGER

600W1



X-Ray View of Machine 600W1
(Lubricating Points shown in solid black)

PARTS LIST

FOR

MACHINE 600W1

INSTRUCTIONS FOR ORDERING

To simplify ordering of parts, exploded views of the various sections of the mechanism are shown in the same illustration as the assembly of those parts. On the page opposite the illustration is a list of parts with key or reference numbers to indicate the position of that part in the illustration. These key numbers in the first column are for reference only and are not to be used in ordering parts.

In ordering from this list, use **ONLY** the **PART** number in the **SECOND** column.

The number stamped on a Sewing Machine Part is the number of the single part only.

Every combination of parts sent out has its specific number which, although not stamped on Parts, must be used when ordering the combination.

Each number always indicates the **SAME PART** in whatever list it appears, or for whatever Machine.

The letters after some of the numbers indicate the style of finish only, as follows:

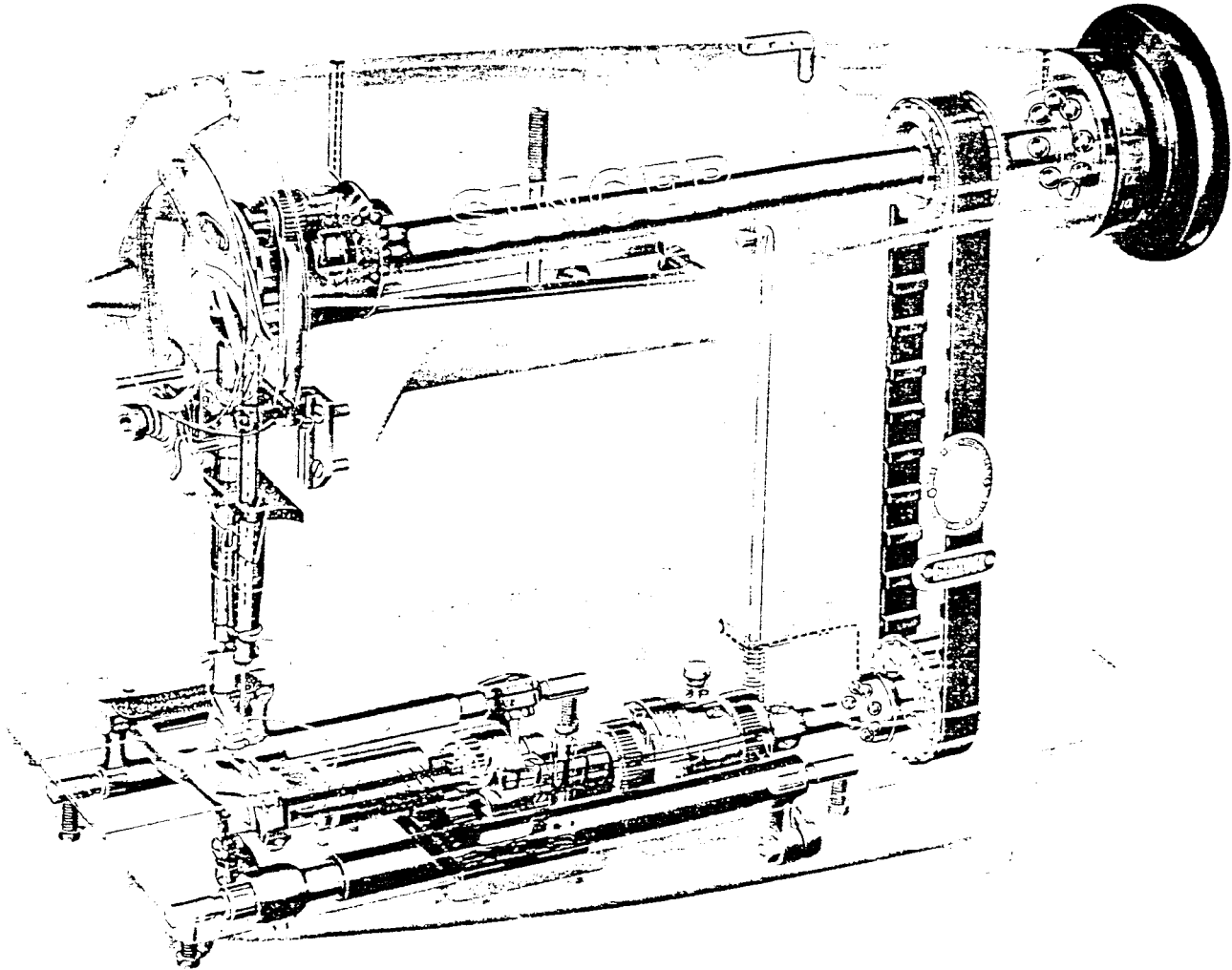
- A—Hardened, Polished, Nickel Plated and Buffed.
- AL—Heat Treated for Toughness.
- ALX—Heat Treated for Toughness and Black Oxide.
- C—Hardened only.
- D—Polished only.
- E—Soft, Not polished.
- F—Hardened and Polished.
- W—Polished and Nickel Plated.
- X—Black Oxide, for Iron and Steel.
- XC—Hardened and Black Oxide, for Iron and Steel.
- Z—Chromium Plated.

These letters **MUST BE USED** when they appear in the list and **AFTER** the number, as in the list.

In this series

- 1 to 1500, 200001 to 201500 and 350001 to 351500 are Screw Numbers.
- 1501 to 1800, 201501 to 201800 and 351501 to 351800 are Nut Numbers.
- 1801 to 2000, 201801 to 202000 and 351801 to 352000 are Roller Numbers.
- 2001 to 50000 and 202001 to 350000 are Numbers of Machine Parts.

SINGER
600W1



X-Ray View of Machine 600W1
(Lubricating Points shown in solid black)

PARTS LIST

FOR

MACHINE 600W1

INSTRUCTIONS FOR ORDERING

To simplify ordering of parts, exploded views of the various sections of the mechanism are shown in the same illustration as the assembly of those parts. On the page opposite the illustration is a list of parts with key or reference numbers to indicate the position of that part in the illustration. These key numbers in the first column are for reference only and are not to be used in ordering parts.

In ordering from this list, use **ONLY** the **PART** number in the **SECOND** column.

The number stamped on a Sewing Machine Part is the number of the single part only.

Every combination of parts sent out has its specific number which, although not stamped on Parts, must be used when ordering the combination.

Each number always indicates the **SAME PART** in whatever list it appears, or for whatever Machine.

The letters after some of the numbers indicate the style of finish only, as follows:

- A—Hardened, Polished, Nickel Plated and Buffed.
- AL—Heat Treated for Toughness.
- ALX—Heat Treated for Toughness and Black Oxide.
- C—Hardened only.
- D—Polished only.
- E—Soft, Not polished.
- F—Hardened and Polished.
- W—Polished and Nickel Plated.
- X—Black Oxide, for Iron and Steel.
- XC—Hardened and Black Oxide, for Iron and Steel.
- Z—Chromium Plated.

These letters **MUST BE USED** when they appear in the list and **AFTER** the number, as in the list.

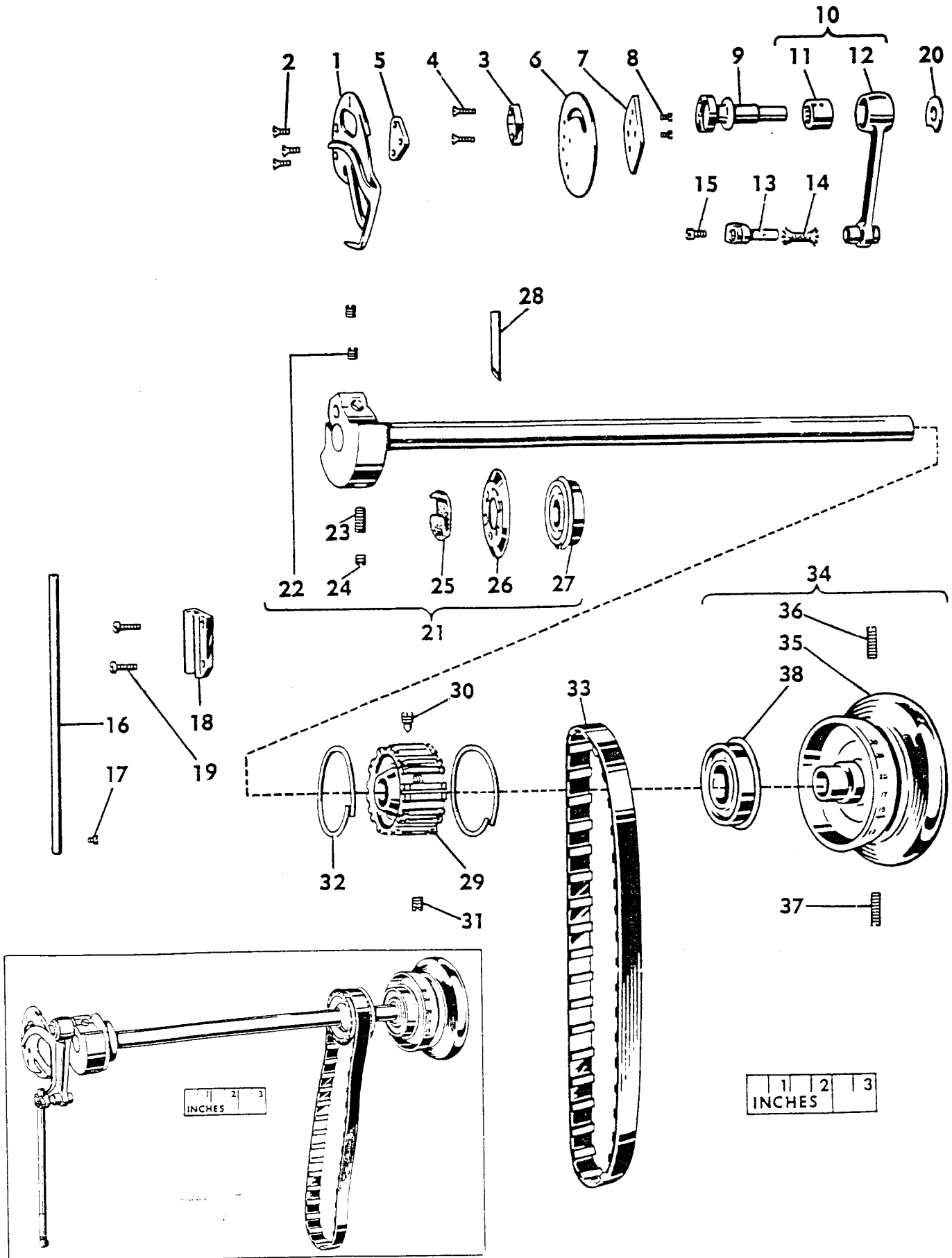
In this series

- 1 to 1500, 200001 to 201500 and 350001 to 351500 are Screw Numbers.
- 1501 to 1800, 201501 to 201800 and 351501 to 351800 are Nut Numbers.
- 1801 to 2000, 201801 to 202000 and 351801 to 352000 are Roller Numbers.
- 2001 to 50000 and 202001 to 350000 are Numbers of Machine Parts.

ARM SHAFT, NEEDLE BAR AND ROTARY TAKE-UP ASSEMBLY

Ref. No.	Part No.	<u>Description</u>
1	272150	Rotary Take-up
2	200577AL	Screw (3)
3	276034	Clamping Plate
4	200567XC	Screw (2)
5	276043	Spacer
6	276032	Adjusting Disc
7	276035	Counter Balance
8	200582X	Screw (2)
9	276020	Connecting Link Hinge Stud
10	276019	Connecting Link 276018 with 270266
11	270266	Needle Bearing
12	*276018	Connecting Link
13	270057	Connecting Stud with 202277 and 350622AL
14	202277	Oil Packing (wick)
15	350622AL	Pinch Screw
16	270050	Needle Bar with 350445F
17	350445F	Set Screw
18	270055	Guide Block
19	200054E	Screw (2)
20	270305	Thrust Washer
21	272147	Arm Shaft 276003 with 200333C, 200378C, 272143, 272145, 276021 and 276023
22	200374C	Set Screw
23	200333C	Crank Position Screw
24	200378C	Check Screw
25	276021	Oiling Felt
26	272145	Flange
27	272143	Ball Bearing (front)
28	272120	Oil Leader Tube
29	271127	Belt Pulley with 200363AL, 350492C and two 214206
30	350492C	Position Screw
31	200363AL	Set Screw
32	214206	Spring Flange
33	270926	Connection Belt (reinforced neoprene)
34	272134	Machine Pulley 272133 with 272142
35	272133	Pulley (aluminum alloy casting) for "V" belt (outside diam. of belt groove 2.9 in.) (rim diam. 4 in.) with 350540C and 350541C
36	350540C	Position Screw
37	350541C	Set Screw
38	272142	Ball Bearing (back)

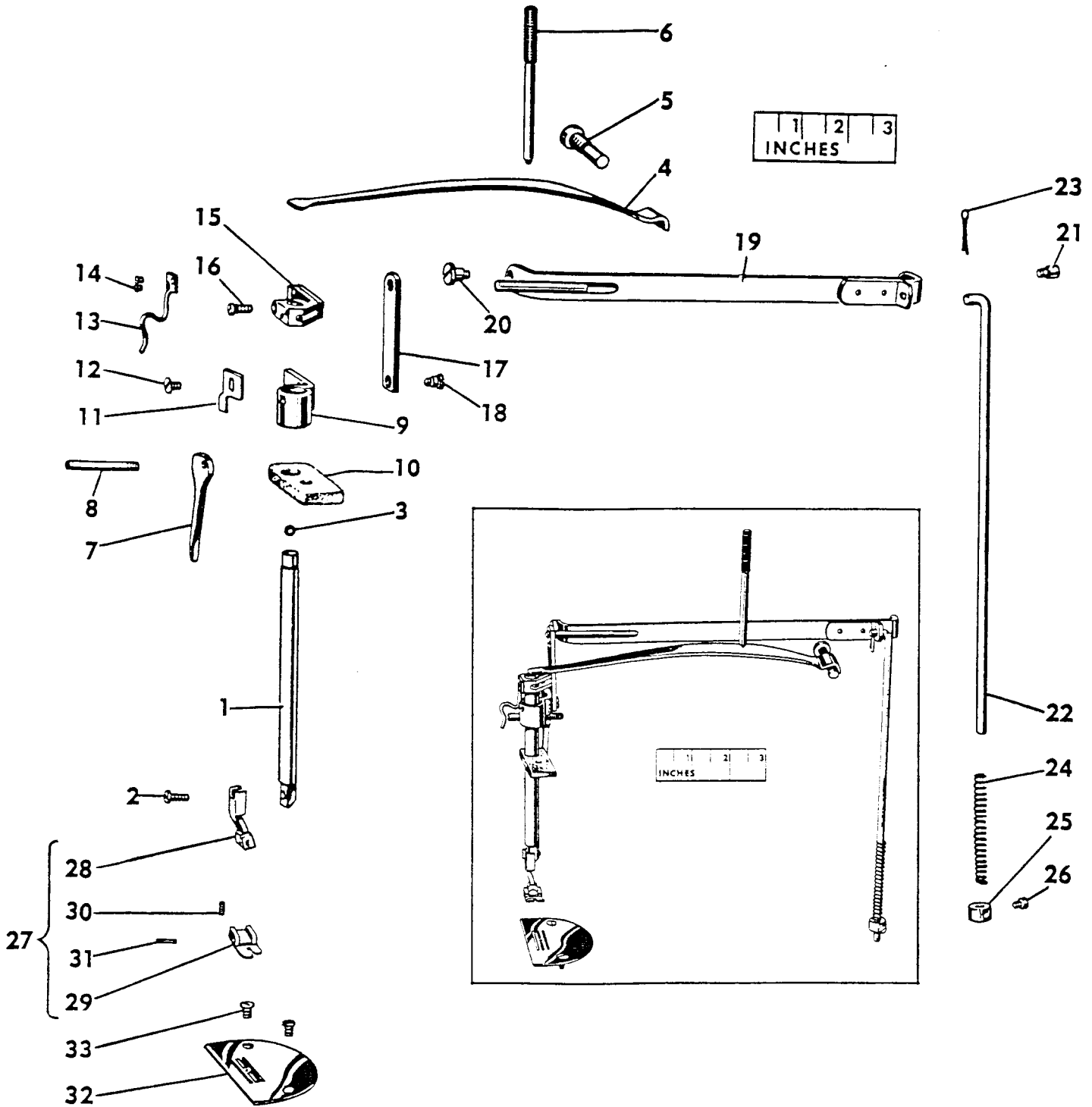
ARM SHAFT, NEEDLE BAR AND ROTARY TAKE-UP ASSEMBLY



THROAT PLATE, PRESSER BAR, PRESSER FOOT AND PRESSER FOOT LIFTING ASSEMBLY

<u>Ref. No.</u>	<u>Part No.</u>	<u>Description</u>
1	272121	Presser Bar with 176X
2	176X	Screw
3	276025	Presser Bar Ball, 7/32 in. diameter
4	272123	Spring
5	350499XC	Screw Stud
6	350538C	Screw (pressure regulating)
7	276027	Presser Bar Lifter
8	350442C	Hinge Screw
9	276028	Lifting Bracket
10	270058	Oiling Felt
11	272135	Tension Releaser (adjustable)
12	200132E	Screw
13	276057	Thread Pull-off
14	200145C	Screw (2)
15	272122	Position Guide with 350411C
16	350411C	Pinch Screw
17	276014	Lifting Link
18	200293C	Hinge Screw
19	272119	Rock Frame
20	200272C	Hinge Screw (front)
21	200679F	Hinge Screw (back)
22	276015	Lifting Rod with 202302
23	202302	Cotter Pin
24	276016	Spring
25	227227	Collar with 200113F
26	200113F	Set Screw
27	161066	Presser Foot (spring hinged) complete, Nos. 62527, 62926, 161065 and 161160
28	62926	Shank
29	161065	Plate
30	161160	Spring
31	62527	Hinge Pin
32	147150XC	Throat Plate (medium needle hole) for 149057
33	691X	Screw (2)

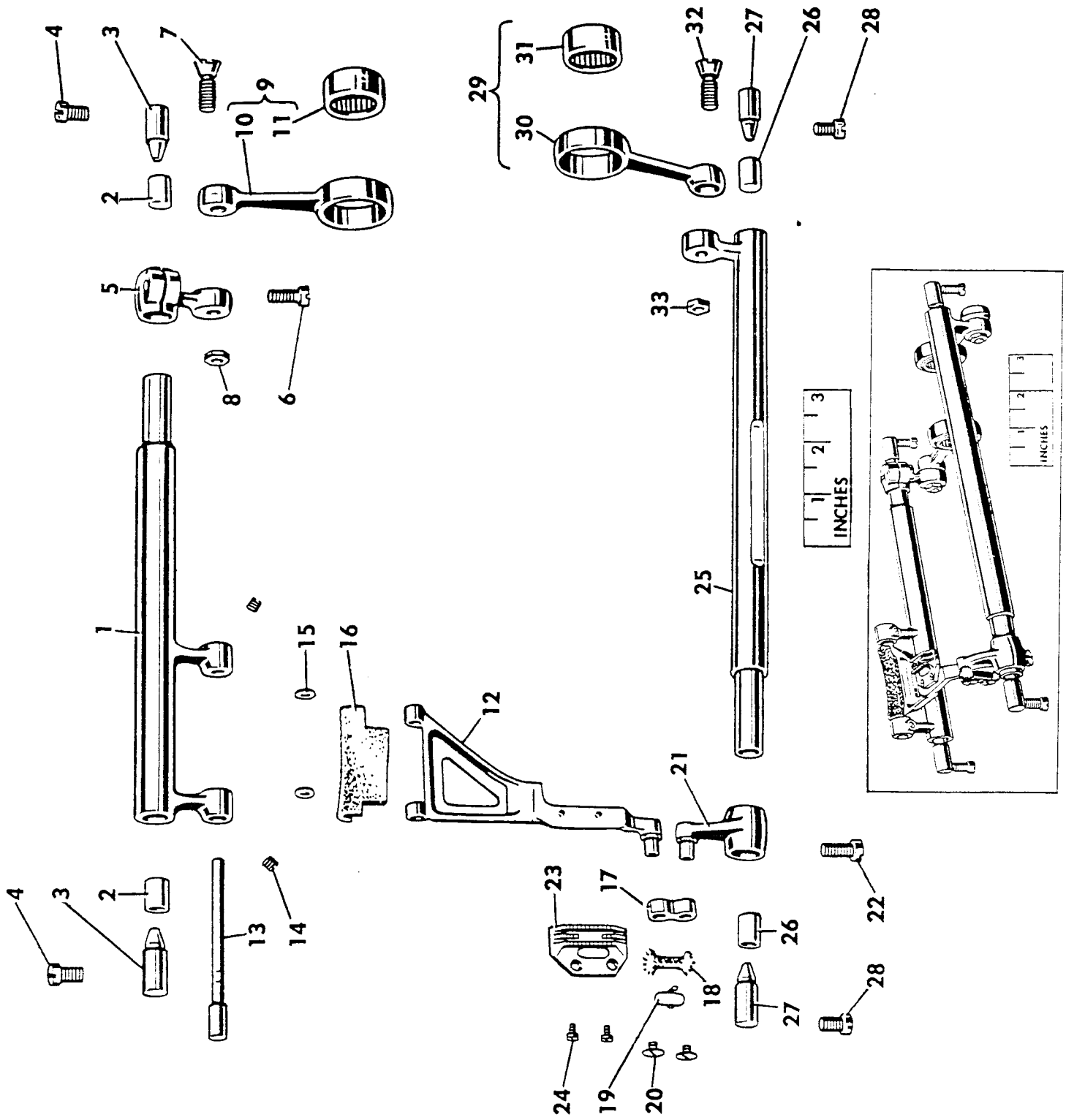
THROAT PLATE, PRESSER BAR, PRESSER FOOT AND PRESSER FOOT LIFTING ASSEMBLY



LOWER FEED ASSEMBLY WITH FEED DOG

<u>Ref. No.</u>	<u>Part No.</u>	<u>Description</u>
1	272116	Feed Driving Rock Shaft with two each 200394C and 270942
2	270942	Insert (nylon)
3	270941	Center (2)
4	201254C	Set Screw (2)
5	272113	Feed Driving Connection Crank with 200040E
6	200040E	Pinch Screw
7	200545C	Hinge Screw
8	201522E	Nut
9	270014	Feed Driving Connection 270013 with 270016
10	270013	Connection
11	270016	Needle Bearing
12	272106	Feed Bar
13	272107	Hinge Pin
14	200394C	Set Screw
15	272108	Thrust Washer (2)
16	272112	Lubricating Felt
17	272110	Lifting Link
18	272115	Oiling Wick
19	272111	Clamp
20	200169C	Cap Screw (2)
21	272109	Feed Bar Lifting Crank with 200040E
22	200040E	Pinch Screw
23	149057	Feed Dog, 21 teeth (22 teeth to the inch) for 147150XC
24	208AL	Screw (2)
25	272118	Feed Lifting Rock Shaft with two 270942
26	270942	Insert (nylon)
27	270941	Center (2)
28	201254C	Set Screw (2)
29	270014	Feed Lifting Connection 270013 with 270016
30	270013	Connection
31	270016	Needle Bearing
32	200545C	Hinge Screw
33	201522E	Nut

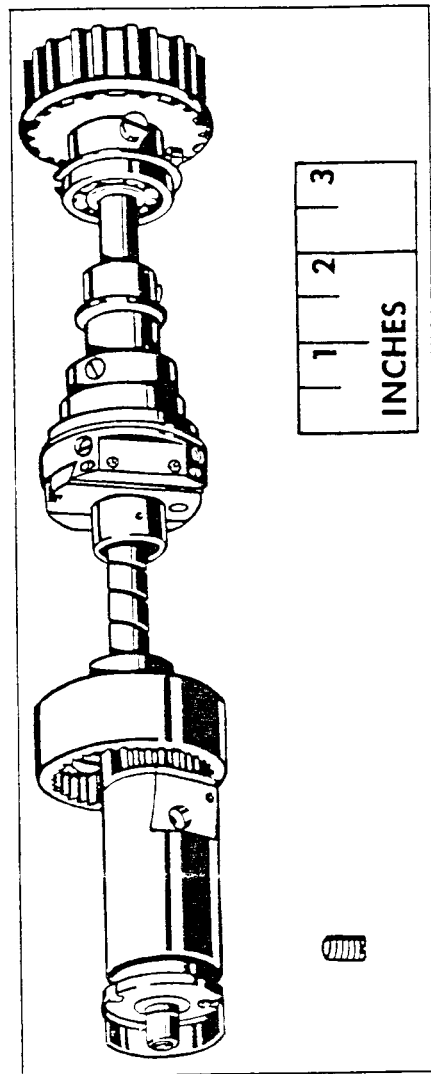
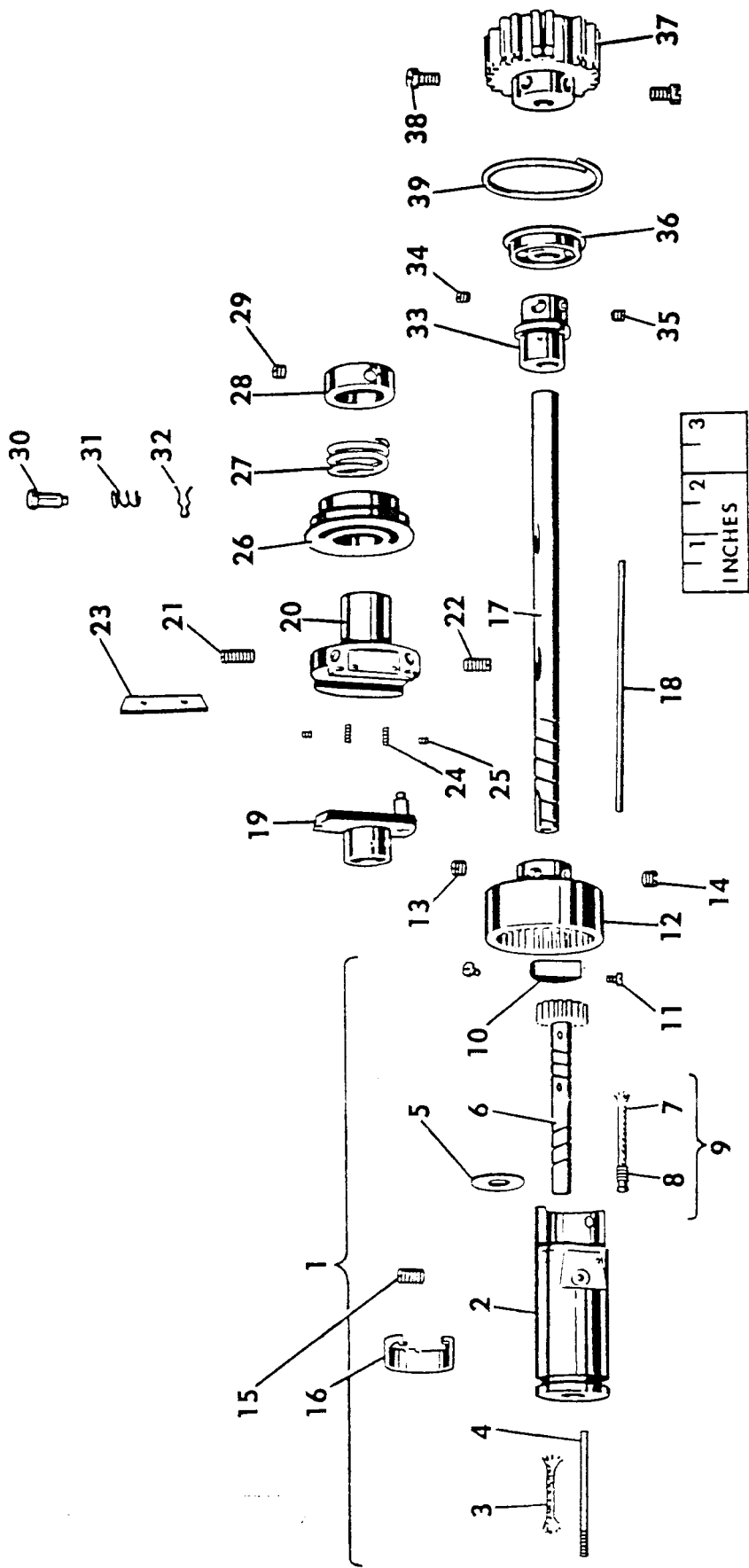
LOWER FEED ASSEMBLY WITH FEED DOG



FEED DRIVING, FEED LIFTING AND ROTATING HOOK SHAFT BUSHING ASSEMBLY

Ref. No.	Part No.	<u>Description</u>
1	276060	Rotating Hook Shaft Bushing complete, Nos. 270044, 270163, 270164 270880, 276059, 276062, 350498E and two 201215D
2	270163	Hook Shaft Bushing
3	270880	Oil Packing (wick)
4	350498E	Oil Regulating Screw
5	270044	Thrust Washer
6	276059	Shaft
7	202423	Oil Filter Wick
8	276061	Holder
9	276062	Oil Filter complete, Nos. 202423 and 276061
10	270164	End Bearing
11	201215D	Screw
12	276047	Driving Shaft Gear (internal teeth) with 200382C and 201220C
13	201220C	Position Screw
14	200382C	Set Screw
15	200346C	Set Screw
16	270879	Oil Guard
17	276044	Driving Shaft
18	270036	Oil Lead Wire
19	270017	Feed Driving Eccentric
20	270944	Flange with 200333C, 200346C, two each 350562XC and 350578XC
21	200333C	Position Screw
22	200346C	Set Screw
23	240231	Eccentric Friction Gib
24	350578XC	Adjusting Screw
25	350562XC	Set Screw
26	270018	Adjusting Disc
27	270137	Spring
28	276009	Collar with 201220C
29	201220C	Set Screw
30	270140	Feed Regulating Stud
31	270026	Spring
32	240245	Retaining Spring
33	272117	Feed Lifting Eccentric with 200382C and 201220C
34	201220C	Position Screw
35	200382C	Set Screw
36	272144	Driving Shaft Ball Bearing
37	270169	Belt Pulley with 214206 and two 200070C
38	200070C	Set Screw
39	214206	Spring Flange

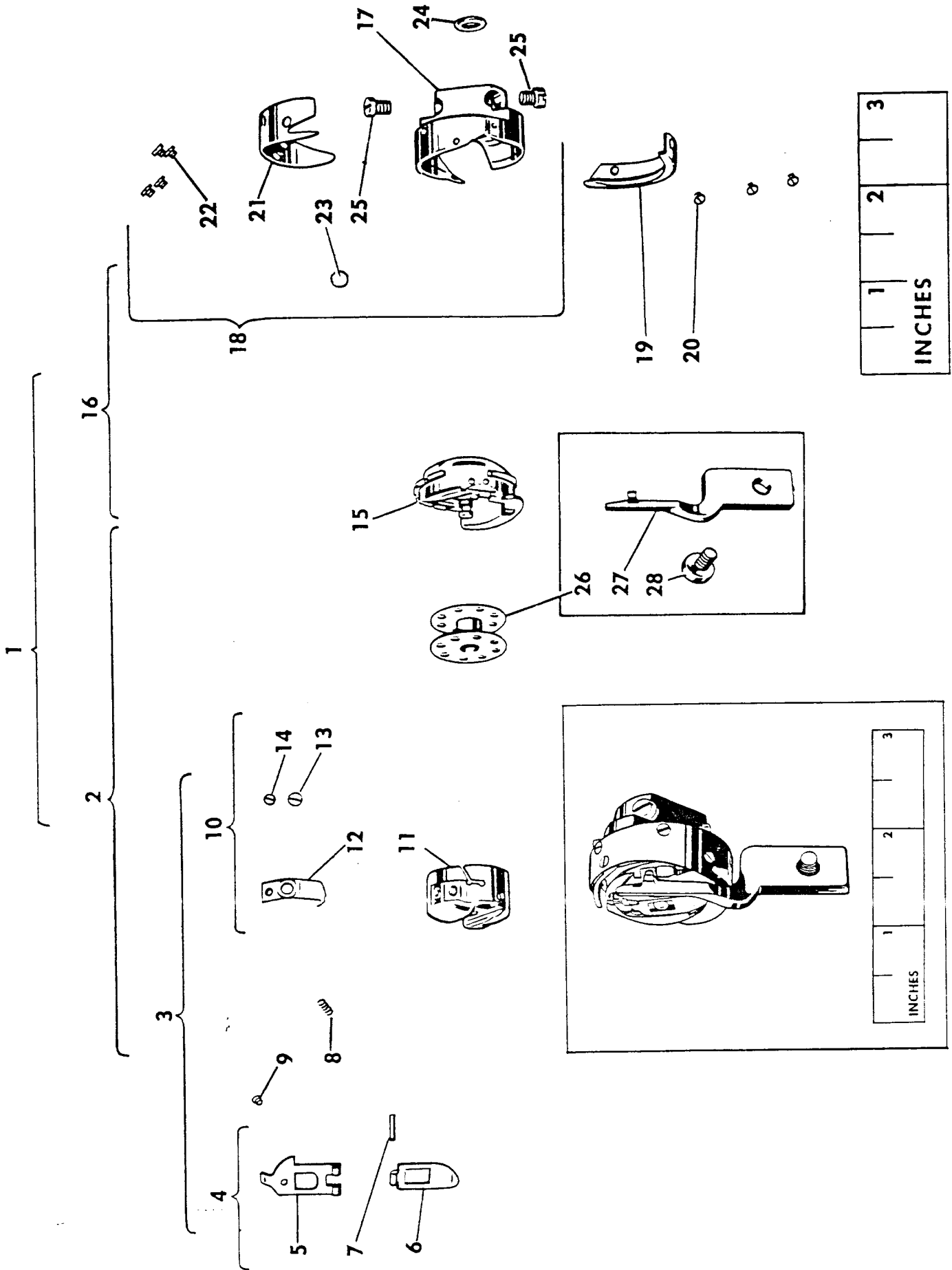
FEED DRIVING, FEED LIFTING AND ROTATING HOOK SHAFT BUSHING ASSEMBLY



HOOK AND BOBBIN CASE COMPLETE

<u>Ref. No.</u>	<u>Part No.</u>	<u>Description</u>
1	272139	Hook272138 with 270939
2	270873	Bobbin Case 270939 with 270872
3	270939	Case complete, Nos. 592E, 2975, 40393 and 270938
4	40393	Hinge, Nos. 2974, 40392 and 125320
5	40392	Latch
6	125320	Lever
7	2974	Fulcrum Pin
8	2975	Spring
9	592E	Stop Screw
10	270938	Case 270937 with 591F, 1380E and 40394
11	270937	Case
12	40394	Tension Spring
13	591F	Regulating Screw
14	1380E	Screw
15	270872	Case Holder (chromium plated)
16	272138	Hook272137with 270872, 272132 and three 1367E
17	272136	Hook with 143301, 270878 and two 1253AL
18	272137	Hook272136with 270874F and four 1053E
19	272132	Section
20	1367E	Screw
21	270874F	Thread Guard
22	1053E	Screw
23	143301	Oil Wick (felt)
24	270878	Retaining Washer (felt)
25	1253AL	Set Screw
26	270010	Bobbin
27	272131	Position Bracket
28	200077D	Screw

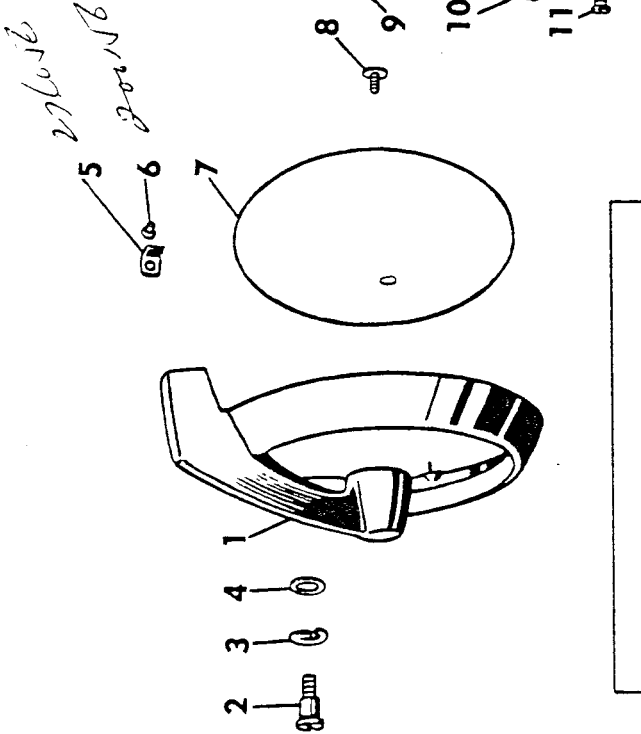
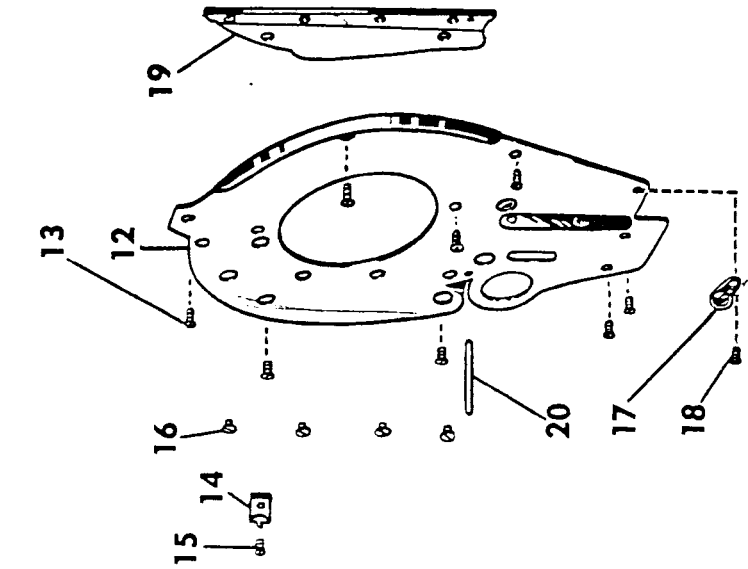
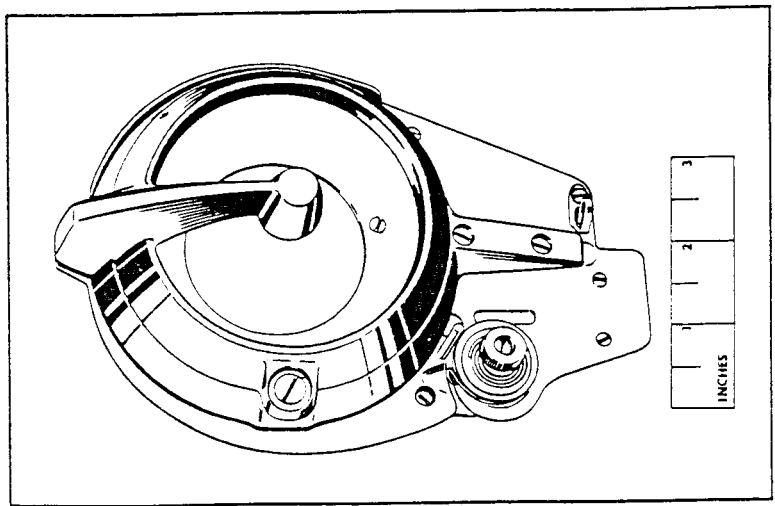
HOOK AND BOBBIN CASE COMPLETE



FACE PLATE, TENSION AND THREAD GUARD

<u>Ref. No.</u>	<u>Part No.</u>	<u>Description</u>
1	272127	Rotary Take-up Guard Cover
2	200263XC	Hinge Screw
3	67425	Spring Washer
4	230743	Thrust Washer
7	272128	Window
8	200161X	Screw
9	272151	Guard with 200685C
10	200049X	Screw (long)
11	201387X	Screw (short)
12	272149	Face Plate with 272105, 276055 and four 200585X
13	350503X	Screw (8)
14	276050	Thread Cutter
15	200583X	Screw
16	200585X	Thread Guard Screw
17	276051	Thread Guide
18	350503X	Screw
19	272105	Thread Guard
20	276055	Guide Pin
21	276049	Tension complete, Nos. 13710, 32572, 39652, 52083, 52098, 270086 and two 2102
22	52098	Tension Stud 50304C with 1560C
23	1560C	Thumb Nut
24	50304C	Stud
25	13710	Spring
26	32572	Releasing Disc
27	2102	Disc
28	39652	Thread Take-up Spring
29	52083	Regulator with 50305C
30	50305C	Set Screw
31	270086	Releasing Pin
32	453XC	Set Screw
	272146	Rotary Take-up Guard Cover Spring Catch
	200685C	Rotary Take-up Guard Thread Guide Screw
	201537E	Rotary Take-up Guard Cover Spring Catch Screw Nut
	350503X	Rotary Take-up Guard Cover Spring Catch Screw

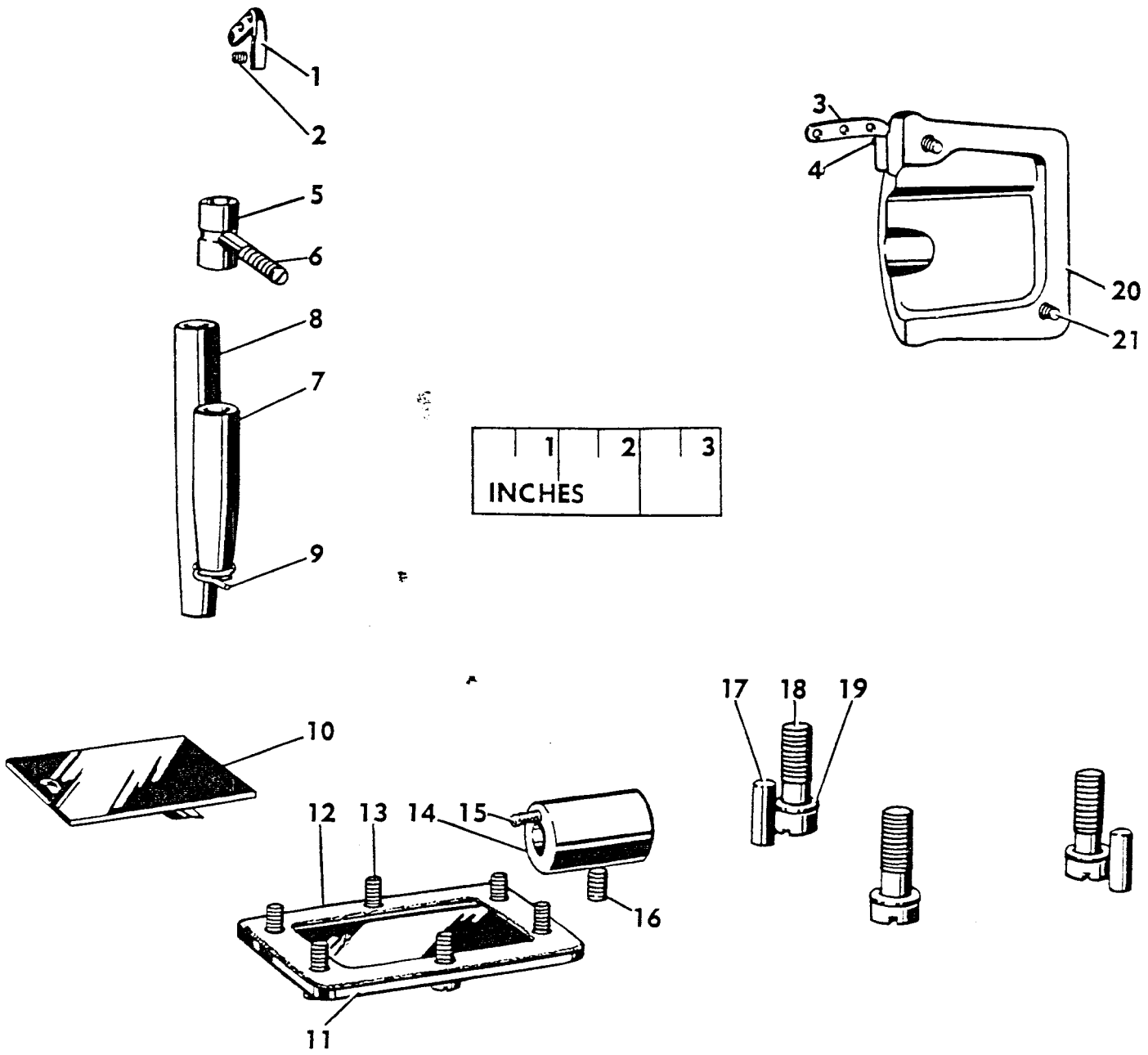
FACE PLATE, TENSION AND THREAD GUARD



**MISCELLANEOUS BUSHINGS, SIDE COVERS
AND BED SLIDE**

<u>Ref. No.</u>	<u>Part No.</u>	<u>Description</u>
1	276052	Thread Retainer (front)
2	200397X	Set Screw
3	270080	Thread Retainer (rear)
4	200366X	Set Screw
5	270261	Needle Bar Bushing (upper)
6	350550AL	Set Screw
7	270124	Needle Bar Bushing (lower)
8	276026	Presser Bar Bushing
9	263118	Thread Guide (on Needle Bar Bushing)
10	270009	Bed Slide
11	270038	Oil Reservoir Cover
12	272155	Gasket
13	200041X	Screw (6)
14	276045	Driving Shaft Bushing with 276046
15	276046	Oil Packing (wick)
16	200346C	Set Screw
17	204235	Arm Position Pin (2)
18	200004E	Screw (3)
19	202005	Washer (3)
20	272102	Cover (back)
21	200053X	Screw (2)
	272154	Rotating Hook Oil Reservoir Cover Washer (fibre) (6)

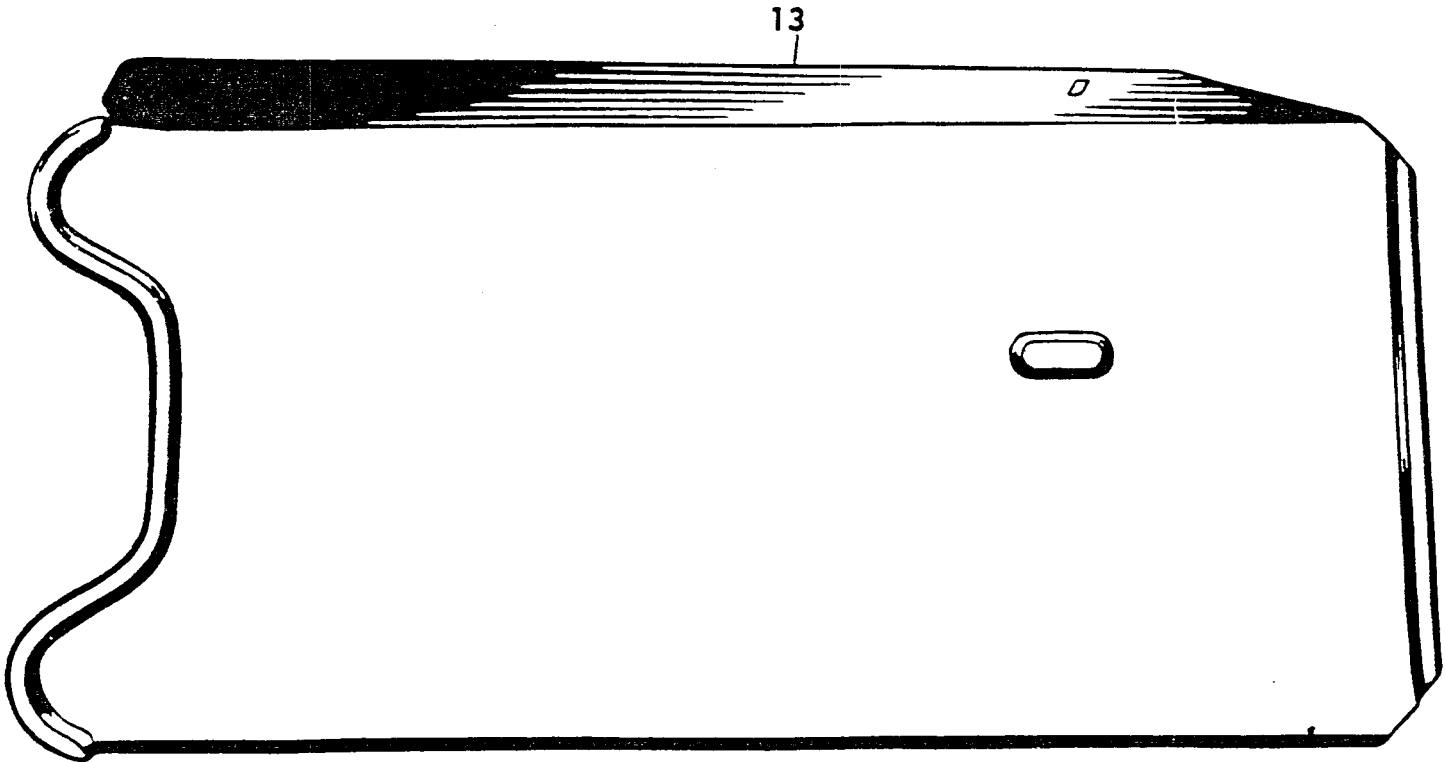
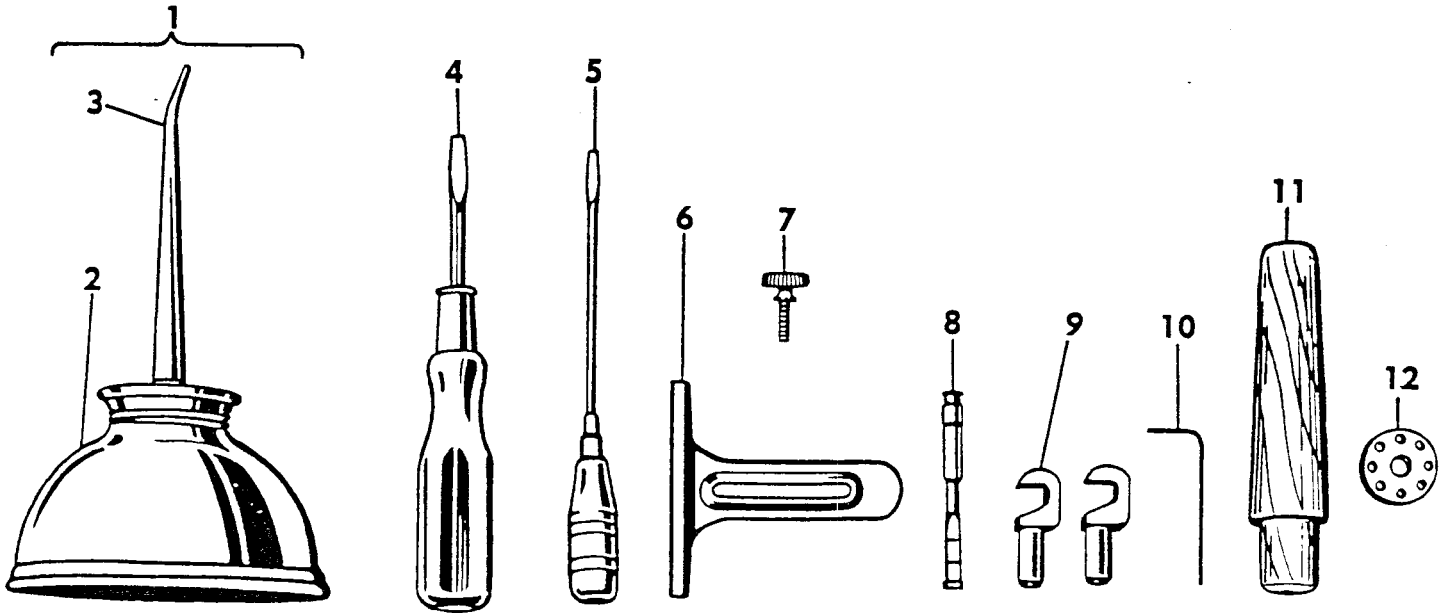
MISCELLANEOUS BUSHINGS, SIDE COVERS AND BED SLIDE



ACCESSORIES

<u>Ref. No.</u>	<u>Part No.</u>	<u>Description</u>
1	228493	Oiler 120342 filled with oil
2	120342	Oiler (copper plated) with 120343
3	120343	Spout (3-1/2 in. long)
4	259477	Screw Driver (5 in. long)
5	228476	Screw Driver (Bobbin Case)
6	25878	Cloth Guide
7	50190X	Thumb Screw
8	270155	Oil Gauge
9	12361	Machine Hinge Connection (2)
10	240566	Wrench (1/16 in. Hex)
11	41400	Machine Rest Pin (wood)
12	270010	Bobbin (2)
13	228478	Drip Pan with four 3/4 in. wire nails
	88x1	Needles, six, size 16
Form	3122W	Instruction Book

ACCESSORIES



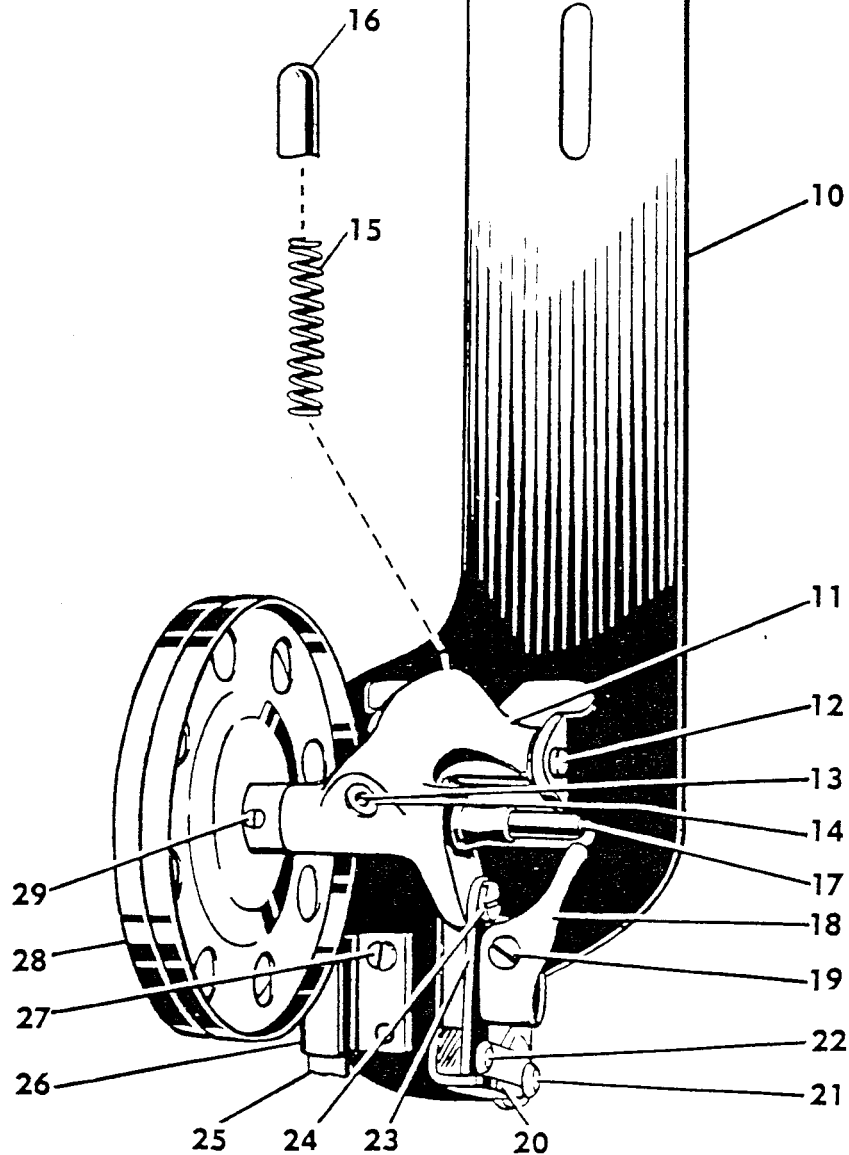
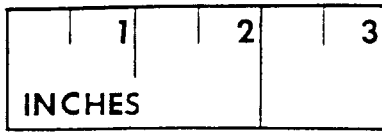
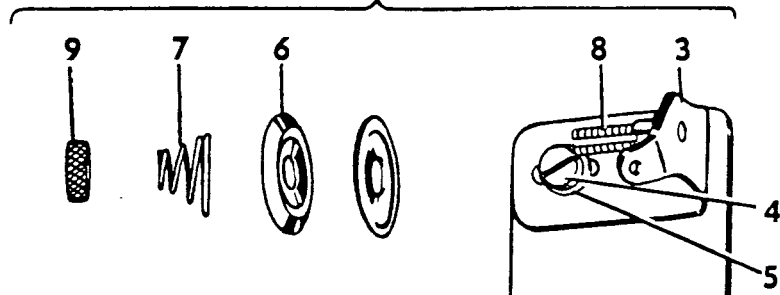
**BOBBIN WINDER (SWINGING AUTOMATIC, RIGHT HAND)
FOR "V" BELT DRIVE**

<u>Ref. No.</u>	<u>Part No.</u>	<u>Description</u>
1	259462	Universal Bobbin Winder complete, Nos. 200056E, 200082D, 200113F, 200299X, 202478, 225381, 225444, 225453 to 225456, 225458, 225462, 228026, 259428, 259429, 259662, 259930, two each 225459 and wood screws 3/4 in., No. 12, R.H.B.
2	225462	Tension Bracket complete, Nos. 13710, 201572X, 225461 and two 2102
3	225461	Tension Bracket with 201499X
4	200082D	Screw
5	228026	Washer
6	2102	Disc
7	13710	Spring
8	201499X	Stud
9	201572X	Thumb Nut
10	259662	Tension Bracket Base
11	225453	Frame with 244071 and 259660
12	225454	Hinge Pin
13	244071	Oil Packing (wick)
14	259660	Well Washer
15	225455	Spring
16	225456	Plunger
17	225381	Spindle
18	225444	Stop Latch
19	200056E	Screw
20	225458	Thumb Lever
21	225459	Hinge Stud
22	225459	Joint Stud
23	202478	Trip Lever
24	200299X	Hinge Screw
25	259428	Brake (leather)
26	259429	Clamp
27	200113F	Screw
28	259930	Pulley with 457AL
29	457AL	Set Screw

BOBBIN WINDER (SWINGING AUTOMATIC, RIGHT HAND) FOR "V" BELT DRIVE

1

2

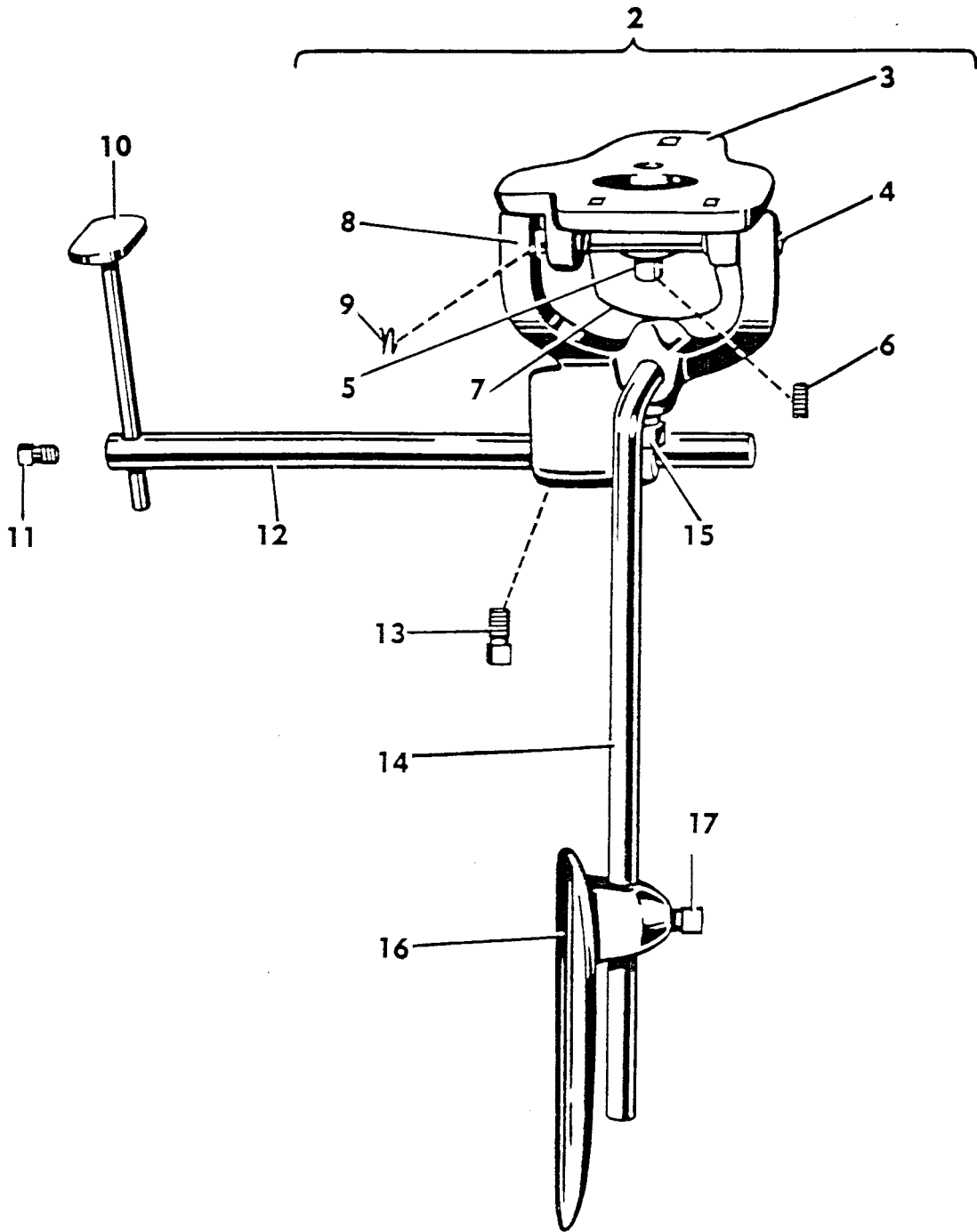


KNEE LIFTER

<u>Ref. No.</u>	<u>Part No.</u>	<u>Description</u>
1	228710	Knee Lifter Rock Lever complete, Nos. 228364, 228365, 228370, 228388 and 228709
2	228709	Bracket 228707 with 228363, 228367, 228386, 228455 and 228713
3	228707	Bracket with 200347AL and three wood screws 7/8 in., No. 12
4	228363	Hinge Pin
5	228367	Stop Stud
6	200347AL	Set Screw
7	228455	Position Spring
8	228713	Rock Lever with two 350231C
9	228386	Spring
10	228365	Rod
11	200530C	Set Screw
12	228370	Extension with 200530C
13	350231C	Set Screw
14	228388	Knee Plate Arm
15	350231C	Set Screw
16	228364	Knee Plate with 350231C
17	350231C	Set Screw

KNEE LIFTER

1



NUMERICAL LIST OF PARTS

Part No.	Page No.	Part No.	Page No.	Part No.	Page No.	Part No.	Page No.
176X....	36	200049X....	44	202277.....	34	259930.....	50
208AL ..	38	200053X....	46	202302.....	36	263118.....	46
453AL ..	44	200054E....	34	202423.....	40	270009.....	46
457AL ..	50	200056E....	50	202478.....	50	270010.....	42,48
591F....	42	200070C....	40	204235.....	46	270013.....	38
592E....	42	200077D....	42	214206.....	34,40	270014.....	38
691X....	36	200082D....	50	225381.....	50	270016.....	38
1053E....	42	200113F....	36,50	225444.....	50	270017.....	40
1253AL ..	42	200132E....	36	225453.....	50	270018.....	40
1367E....	42	200145C....	36	225454.....	50	270026.....	40
1380E....	42	200161X....	44	225455.....	50	270036.....	40
1560C....	44	200169C....	38	225456.....	50	270038.....	46
2102.....	44,50	200263XC ..	44	225458.....	50	270044.....	40
2974.....	42	200272ALX .	36	225459.....	50	270050.....	34
2975.....	42	200293AL ..	36	225461.....	50	270055.....	34
12361.....	48	200299X....	50	225462.....	50	270057.....	34
13710.....	44,50	200333C....	34,40	227227.....	36	270058.....	36
25878.....	48	200346C....	40,46	228026.....	50	270080.....	46
32572.....	44	200347AL ..	52	228363.....	52	270086.....	44
39652.....	44	200363AL ..	34	228364.....	52	270124.....	46
40392.....	42	200366X....	46	228365.....	52	270137.....	40
40393.....	42	200374AL ..	34	228367.....	52	270140.....	40
40394.....	42	200378C....	34	228370.....	52	270155.....	48
41400.....	48	200382ALX .	40	228386.....	52	270163.....	40
50190X....	48	200394C....	38	228388.....	52	270164.....	40
50304C....	44	200397X....	46	228455.....	52	270169.....	40
50305C....	44	200530C....	52	228476.....	48	270261.....	46
52083.....	44	200545C....	38	228478.....	48	270266.....	34
52098.....	44	200567XC ..	34	228493.....	48	270305.....	34
62527.....	36	200577AL ..	34	228707.....	52	270872.....	42
62926.....	36	200582X....	34	228709.....	52	270873.....	42
67425.....	44	200583X....	44	228710.....	52	270874F....	42
120342.....	48	200585X ...	44	228713.....	52	270878.....	42
120343.....	48	200679F....	36	230743.....	44	270879.....	40
125320.....	42	200685C....	44	240231.....	40	270880.....	40
143301.....	42	201215D....	40	240245.....	40	270926.....	34
147150XC ..	36	201220ALX .	40	240566.....	48	270937.....	42
149057.....	38	201254C....	38	244071.....	50	270938.....	42
161065.....	36	201387X....	44	259428.....	50	270939.....	42
161066.....	36	201499X....	50	259429.....	50	270941.....	38
161160.....	36	201522E....	38	259462.....	50	270942.....	38
200004E....	46	201537E....	44	259477.....	48	270944.....	40
200040E....	38	201572X....	50	259660.....	50	271127.....	34
200041X....	46	202005.....	46	259662.....	50	272102.....	46

NUMERICAL LIST OF PARTS

Part No.	Page No.	Part No.	Page No.	Part No.	Page No.	Part No.	Page No.
272105.....	44	*276018.....	34				
272106.....	38	276019.....	34				
272107.....	38	276020.....	34				
272108.....	38	276021.....	34				
272109.....	38	276025.....	36				
272110.....	38	276026.....	46				
272111.....	38	276027.....	36				
272112.....	38	276028.....	36				
272113.....	38	276032.....	34				
272115.....	38	276034.....	34				
272116.....	38	276035.....	34				
272117.....	40	276043.....	34				
272118.....	38	276044.....	40				
272119.....	36	276045.....	46				
272120.....	34	276046.....	46				
272121.....	36	276047.....	40				
272122.....	36	276049.....	44				
272123.....	36	276050.....	44				
272127.....	44	276051.....	44				
272128.....	44	276052.....	46				
272131.....	42	276055.....	44				
272132.....	42	276057.....	36				
272133.....	34	276059.....	40				
272134.....	34	276060.....	40				
272135.....	36	276061.....	40				
272136.....	42	276062.....	40				
272137.....	42	350231C....	52				
272138.....	42	350411C....	36				
272139.....	42	350442C....	36				
272142.....	34	350445F....	34				
272143.....	34	350492C....	34				
272144.....	40	350498E....	40				
272145.....	34	350499XC ..	36				
272146.....	44	350503X....	44				
272147.....	34	350538C....	36				
272149.....	44	350540C....	34				
272150.....	34	350541C....	34				
272151.....	44	350550AL ..	46				
272154.....	46	350562XC ..	40				
272155.....	46	350578XC ..	40				
276009.....	40	350622ALX .	34				
276014.....	36						
276015.....	36						
276016.....	36						

INDEX

<u>Description</u>	<u>Page</u>
Accessories	48, 49
Arm Shaft Connection Belt, removing and replacing	28, 29
Arm Shaft, removing	30
Bobbin, removing	6
Bobbin, winding	7
Bobbin Case, replacing	9
Bobbin Case, threading	8
Description of Machine	3
Feed Dog, setting at correct height	27
Feed Eccentric, adjusting	28
Feed Mechanism	27
Foreword	2
Hints for Perfect Operation	15
Hook Driving Shaft, removing and replacing	26, 27
Length of Stitch, regulating	14
Needle Bar, setting at correct height	19
Needle Guard and Needle, determining correct relationship of	21, 22
Needles	5
Needle, setting	9
Oiling Machine	4, 5
Parts List, Descriptions and Illustrations	33 to 53
Parts List, Numerical	55 and 56
Preparing to Sew	11
Presser Bar Adjustments	18
Pressure on Material, regulating	14
Removing Work	11
Rotating Hook Shaft Bushing, adjusting	24, 25
Setting Up	4
Sewing, to commence	11
Sewing Hook, removing and replacing	23
Sewing Hook Shaft, removing	24
Sewing Hook, timing	20
Speed	3
Tensions	13
Tensions, regulating	13
Tension Releaser, adjustment of	18
Thread	6
Thread Take-Up, removing broken thread	12
Thread Take-Up Spring, adjustment of	17
Threading, upper	10
Timing Machine	16